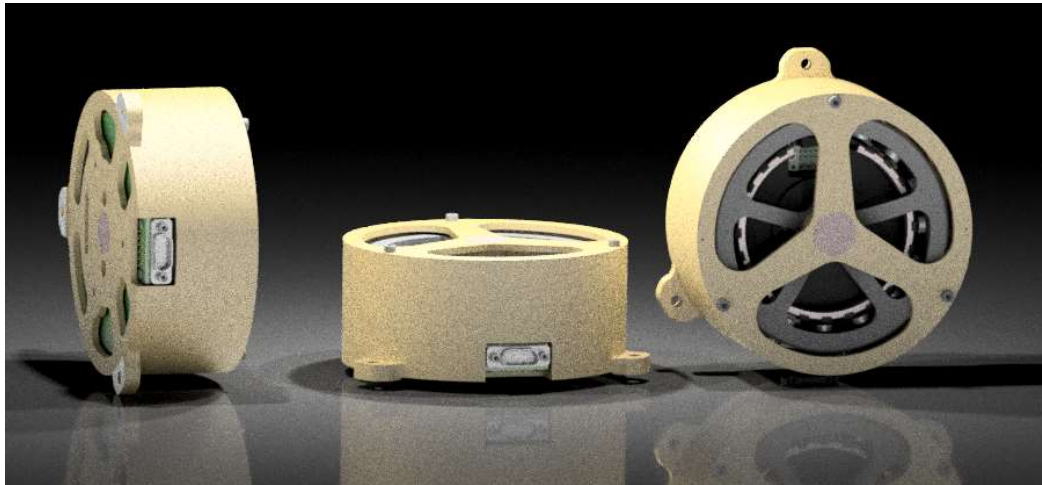
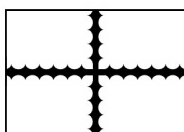


Rad-Hard Reaction Wheels (RW4-0.2 / RW4-0.4)



Momentum	Nominal: 0.2 Nms (light rotor) or 0.4 Nms (heavy rotor)
Torque	±100 mNm at nominal momentum Enhanced motor cooling for high duty cycle (CMG replacement)
Control Mode	Speed, torque or current with built-in control CPU
Command / Telemetry	Redundant RS-485
Mechanical	Dimensions: 110 mm dia x 48 mm high Mass: 600g (light rotor) or 770 g (heavy rotor)
Supply Voltage	Nominal: 24 V to 34 V +75 V options available
Supply Power	TBD. Regenerative braking returns power to bus.
Environment	Thermal: -40°C to +70°C (operating) Vibration: >20 g _{RMS} ,
Radiation	> 60 krad Total Dose, with LDRS testing Heavy ion tested to 50 MeV-cm ² /mg Hardware TMR on all flip-flops, EDAC on all RAM
Reliability	Diamond coated hybrid ball bearings Redundant motor windings Active neutralization of rotor static charge
Heritage	Mechanical design from RW3-1.0, with 52 Units on-orbit. Qualification in 2019Q4
Price	TBD



**Sinclair
Interplanetary**

Contact
+1-647-286-3761
dns@sinclairinterplanetary.com